



JUV

ergotron



JŪV

MOVE TO REJŪVENATE

As organizations respond to workplace trends and technology advancements, they must reimagine and reJŪVenate existing office designs to serve a diverse and powerful workforce. We set out to create a product line that fuses captivating aesthetics with unexpected functionality.

Meet JŪV™ by Ergotron.



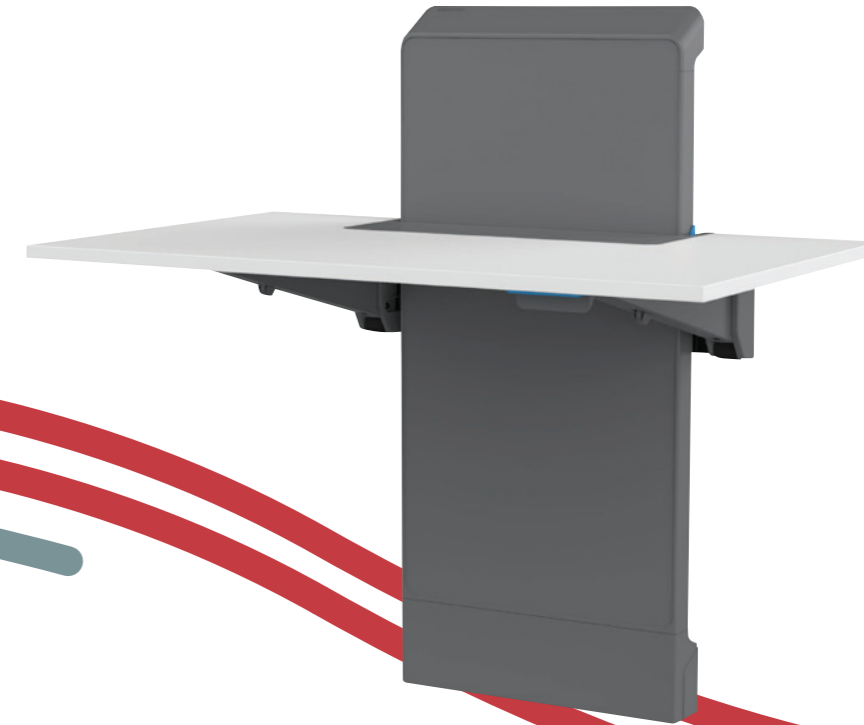
Trends Affecting Workplace Design

1. Exhilarating Technology Advancement

Technology advancements fuel exhilarating new possibilities for improving how humans perform daily tasks. With artificial intelligence (AI), Internet of Things (IoT) and the Fourth Industrial Revolution (Industry 4.0) disrupting industries worldwide, the way we work together is evolving. Organizations are becoming smarter and more productive as machines and humans intersect. Workspace design that couples these advancements with human workflows and sustainable solutions will enable organizations to thrive.

2. Next Gen Workforce Fluidity

Today's organizations face challenges related to changing demographics, an ongoing talent shortage, the impact of data on employees and financial constraints. The creation of workflow fluidity is an emerging response to these 21st century realities. Workspace design has responded with hoteling stations, innovative touch-down spaces and agile areas to allow fluidity in how people work. Additionally, remote work and always-on connectivity enable gig workers to deliver content on their own terms.

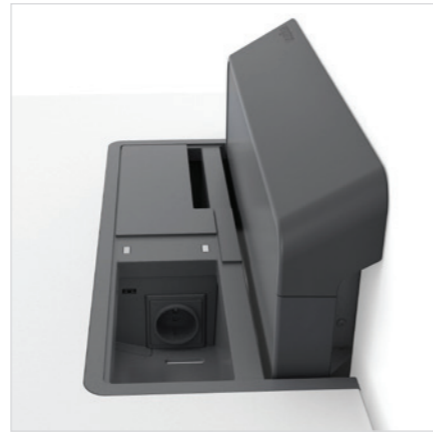


JÜV by Ergotron

The JÜV family is designed to join digital promises with the fluid needs of an evolving workplace through reJÜVenation. JÜV provides the full BIFMA ergonomic range to create office designs that inspire movement with non-electric, adjustable surfaces for comfortable sitting or standing. Users have access to power and charging at their fingertips without sacrificing aesthetics with the controlled and concealed cable management system.



Discreet power access enables seamless digital working.



Integrated monitor riser offers additional comfort and personalization.





JUV Wall

An industry first, JUV Wall converts underutilized spaces into productive and collaborative work environments. A non-electric, adjustable surface flips down when not in use and provides the full BIFMA ergonomic range for comfortable sitting or standing. Users have access to power and charging without sacrificing aesthetics. By integrating into underutilized office areas, JUV Wall promotes flexibility and mobility to create an agile and fluid work environment.





ENGINE

61-333-029	Lift Engine Graphite
61-333-030	Lift Engine Snow White

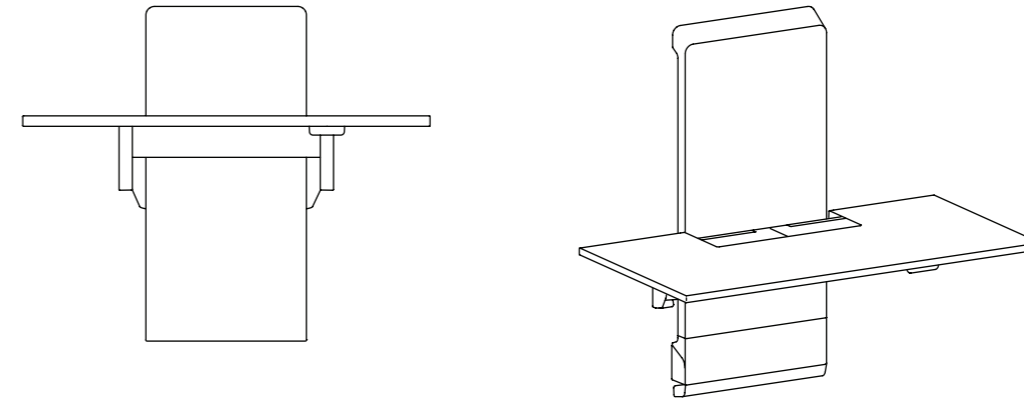
WORKSURFACES

JWW-61100-A-897	61 x 100 x 2 cm, 2 mm ABS Icy White
JWW-61100-A-898	61 x 100 x 2 cm, 2 mm ABS Lundbirke
JWW-70120-A-897	70 x 120 x 2 cm, 2 mm ABS Icy White
JWW-70120-A-898	70 x 120 x 2 cm, 2 mm ABS Lundbirke

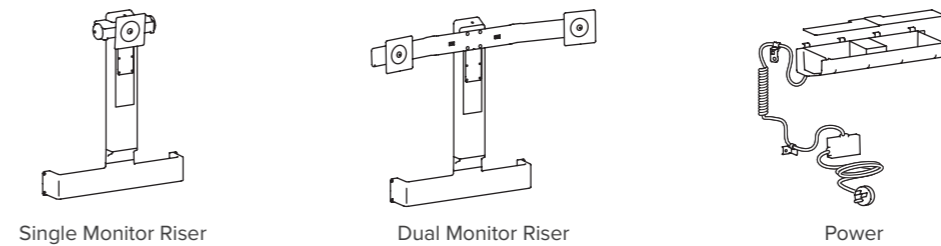
ACCESSORIES

83-091-029	Standard Electric Unit, EU, Graphite
83-091-030	Standard Electric Unit, EU, Snow White
83-092-029	Standard Electric Unit, UK, Graphite
83-092-030	Standard Electric Unit, UK, Snow White
JWA-DHD-029	JÜV, Wall, Dual Monitor Accessory Riser Kit, Graphite
JWA-DHD-030	JÜV, Wall, Dual Monitor Accessory Riser Kit, Snow White
JWA-SLD-029	JÜV, Wall, LD Single Monitor Accessory Riser Kit, Graphite
JWA-SLD-030	JÜV, Wall, LD Single Monitor Accessory Riser Kit, Snow White

Wall



Accessories

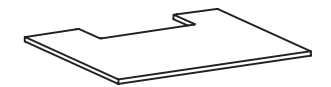


Single Monitor Riser

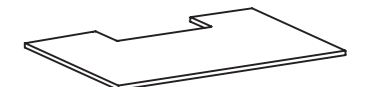
Dual Monitor Riser

Power

Worksurface Sizes



61 x 100 x 2 cm



70 x 120 x 2 cm



Worksurface warranty valid for one year

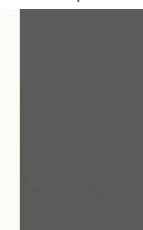
Worksurface Finishes

Lundbirke Icy White



Trim Finishes

Snow White Graphite





Download additional resources at [ergotron.com/pro](https://www.ergotron.com/pro)

EMEA Sales:

Amersfoort, The Netherlands / +31.33.45.45.600 / info.eu@ergotron.com

© Ergotron, Inc. revision 05.10.2020 / print 18.03.2020

Content subject to change.

Ergotron devices are not intended to cure, treat, mitigate or prevent any disease.

Patent information available at www.ergotron.com/patents